

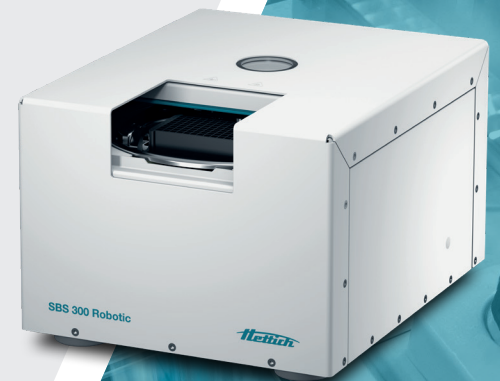
Automated centrifuges

## SBS 300 | 300 R Robotic

### Essential and modular

The SBS 300 ROBOTIC is a front-loading centrifuge, developed and optimized for microplates in high-throughput screening. It can be loaded frontally via the xy-axes, as well as via the z-axis and is particularly suitable for collaborative robotic systems. The compact design opens up a wide range of applications in automation. The robust construction, ensures increased safety and durability – especially in high throughput and continual use environments.

The SBS 300 R ROBOTIC has a modular design and can be cooled by an external cooling unit.



### — Highlights

- Max. RPM: 6,300 min<sup>-1</sup>
- Max. RCF: 4,615
- Max. capacity: 2 microtiter plates (max. 128x86x46 mm)
- Loading & unloading hatch for front or top loading
- Hatch opening time < 6 seconds
- Fast + Slow positioning mode
- Positioning time of 5 seconds
- Positioning accuracy +/- 0,5° tolerance
- Imbalance tolerance 50 g
- Internal air cooling
- External liquid cooling (SBS 300 R Robotic)

### — Features

- Metal housing and lid
- Stainless steel inner chamber
- Automatic rotor recognition
- Error display (optional)
- Imbalance switch-off
- Overtemperature fuse
- Interface via RS 232
- Overcurrent limitation when closing the hatch
- Manual operation via key switch possible

## Technical data

	SBS 300 ROBOTIC air cooled	SBS 300 R ROBOTIC external cooling
voltage *)	200-240 V 1~	200-240 V 1~
frequency	50-60 Hz	50-60 Hz
max. consumption	1.400 VA	1.400 VA
max. capacity	2 microtiter plates (max. 128x86x46 mm)	2 microtiter plates (max. 128x86x46 mm)
max. RPM	6,300 min <sup>-1</sup>	6,300 min <sup>-1</sup>
max. RCF	4,615	4,615
Permissible density of the centrifuged material	1.2 kg/dm <sup>3</sup>	1.2 kg/dm <sup>3</sup>
dimensions (WxDxH)	412x508x311 mm	411 x508x311 mm
weight	approx. 80 kg	approx. 80 kg
<b>Cat. No.</b>	<b>8300</b>	<b>8305</b>
<b>Cat. No. Sets</b>	<b>8300-S01</b>	<b>8305-S01</b>

## Swing-out, 2-place

Rotor	
max. RPM   max. RCF <sup>2)</sup>	6,300 min <sup>-1</sup>   4,615
max. capacity	2 microtiter plates
run-up   run-down, braked in sec	63 / 29
angle	90°
<b>Cat. No.</b>	<b>8322-R</b>

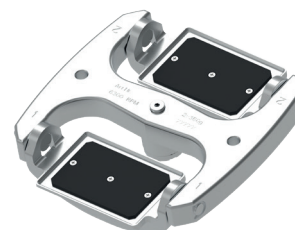


### Bucket

Cat. No.



**8330-R/2**



Plates		
W x D x H in mm	128x86x44,5	128x86x46
capacity in ml	-	-
max. RCF <sup>2)</sup>	4,615	4,615
radius in mm	104	104
plates per rotor	2	2
<b>Cat. No.</b>	<b>DWP</b>	<b>MS</b>



2) Please note that the RCF values indicated refer only to rotor performance. The max. permissible RCF for the microtiter plates used should be verified with the individual manufacturers.

## Certifications / Registrations

Product certification:

Company certifications:

