

FERMENTATION BATH

A customized controlled manner in order to preserve, enhance or transform food.

Hettich Benelux fermentation baths are designed entirely to meet the specific requirements of your production or research process. The AISI 316 interior ensures high chemical resistance, optimum hygiene and easy cleaning. Thanks to a virtually seamless finish and a drain per compartment, the fermentation bath is easy to clean.

Whether you require a floor-standing or tabletop model, electrically or steam-heated, we supply the fermentation bath that perfectly suits your application.

Some options / features

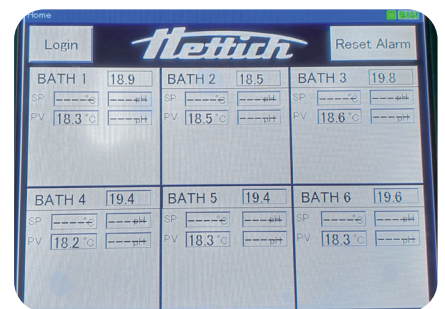
- Exterior 304 or 316 stainless steel.
- Interior constructed of 316 stainless steel and treated for high chemical resistance and easy cleaning.
- Floor-standing or tabletop model.
- Configuration with 1 to 9 compartments possible (floor-standing model)
- Configuration with 1 to 4 compartments possible (table top).
- Option for a different recipe per compartment.
- Independent temperature control per compartment.
- Each compartment fitted with a drain for easy cleaning.
- Cooling via tap water (injection), ice water and built-in compressor. Combination possible.
- Control panel on the right or left side.
- Height-adjustable boiler holders for different diameters of buckets
- Fitted as standard with touchscreen controller IP65
- Max. temperature range 95 °C.
- External logging software for audit trail and batch control.
- Automatic control (start/stop) of agitators, controlled by pH/temperature.
- Virtually seamless finish for optimum hygiene

Applications

- Fermentation of yogurt.
- Fermentation of icecream.
- Fermentation of cheese

Specifications

Standard Model	
Volume	depending on customer wishes
External dimensions lxbxh	depending on customer wishes
External material	Stainless steel 304 or 316
Internal material	Stainless steel 316
Max. temperature	95°C
Power	230 V, 50/60 Hz, 3600VA, 16 A
Weight	depending on the model



Control panel

Recommendations

titel titel - art. no. 12345
Aanbeveling 2

Options

Exterior stainless steel 304 or 316.
PH measurement and monitoring
External chiller
Division of the bath to facilitate installation.
Customization

Type	Art. No.
Customized product	n.a.